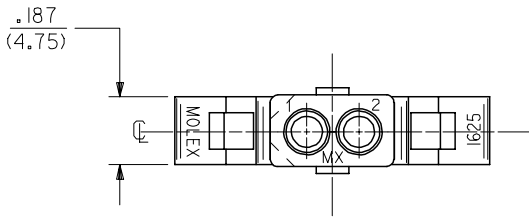


13 12 11 10 9 8 7 6 5 4 3 2 1

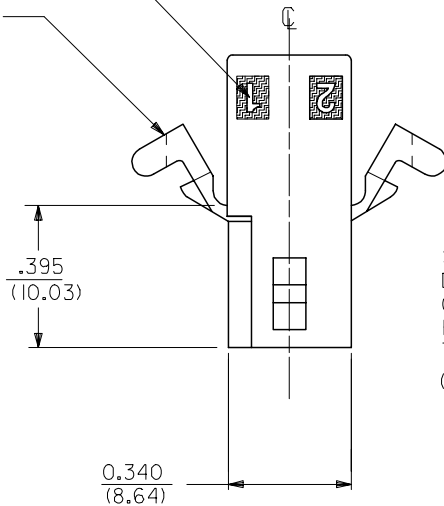
J
I
H
G
F
E
D
C
B
A

J
I
H
G
F
E
D
C
B
A

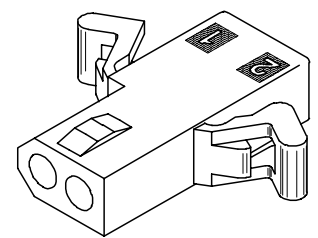
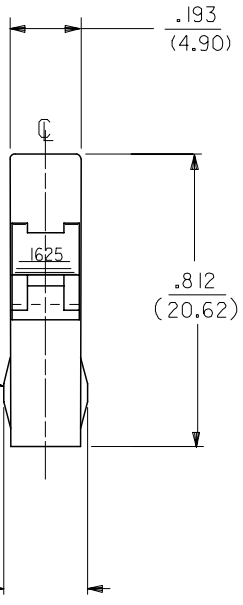


△ CIRCUIT I.D.

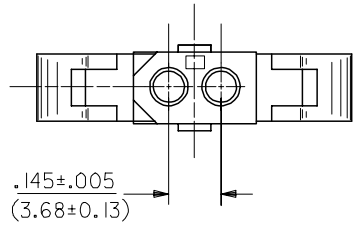
MOUNTING EAR (2 PL)
(WHEN SPECIFIED)
SEE DETAIL 3 OR 4



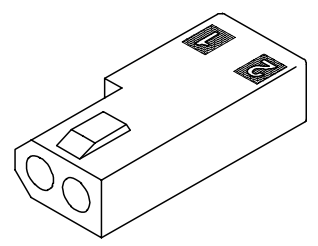
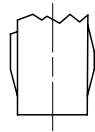
STANDARD
DETENT SHOWN.
OPTIONAL
POSITIVE LOCK
THIS SIDE ONLY
(SEE NOTE △5)



RECEPTACLE HOUSING
(1625-2R2 SHOWN)



OPTIONAL POSITIVE LOCK
ONE SIDE ONLY
SCALE 4:1



RECEPTACLE HOUSING
(1625-2R3 SHOWN)

| | | | | | | | | | |
|--|-------------------------------|---|------------|--------------------------|--------------------|--|----------------------|------------------------|--|
| UPDATE TITLE BLOCK EC NO: UCP2007-1980 DRAWN/PRI/DDR 2007/04/13 CHKD: AEL/HAG 2007/04/16 APPR: FSM/TH 2007/04/19 REV: A/1 | QUALITY SYMBOLS ▽=0 ▽=0 | GENERAL TOLERANCES (UNLESS SPECIFIED) | | DIMENSION STYLE IN/MM | | SCALE 4:1 | DESIGN UNITS INCH | THIRD ANGLE PROJECTION | |
| | | 4 PLACES ± --- ± --- 3 PLACES ± --- ± .007 2 PLACES ± 0.18 ± .010 1 PLACE ± 0.25 ± --- | mm INCH | DRAWN BY JJS | DATE 1988/04/14 | TITLE PLUG & RECEPTACLE 2 CIRCUIT HOUSINGS .062/(1.57) DIA. | | | |
| | | ANGULAR ± 1 ° | | CHECKED BY RW | DATE 1988/04/14 | MATERIAL NO. SEE CHART | | | |
| | | DRAFT WHERE APPLICABLE MUST REMAIN WITHIN DIMENSIONS | | APPROVED BY RAS | DATE 1988/04/14 | DOCUMENT NO. SD-1625-2* | | SHEET NO. 2 OF 3 | |

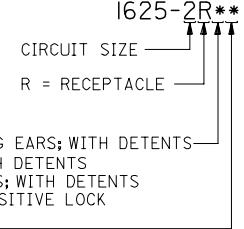
12 11 10 9 8 7 6 5 4 3 2 1

13 12 11 10 9 8 7 6 5 4 3 2 1

| PLUG | |
|------------|------------|
| PART NO. | ENG. NO. |
| 03-06-7023 | I625-2PIBK |
| 03-06-2023 | I625-2P1 |
| 03-06-7027 | I625-2P2BK |
| 03-06-2024 | I625-2P2 |
| | |
| | |
| | |
| | |
| | |
| | |

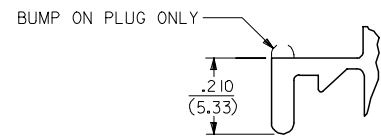
| RECEPTACLE | |
|------------|------------|
| PART NO. | ENG. NO. |
| 03-06-6023 | I625-2RIBK |
| 03-06-1020 | I625-2R3 |
| 03-06-1023 | I625-2R1 |
| 03-06-1022 | I625-2R2 |
| 03-06-6025 | I625-2R2RD |
| 03-06-6026 | I625-2R2GN |
| 03-06-6027 | I625-2R2BU |
| 03-06-6022 | I625-2R2BK |
| 03-06-6028 | I625-2R1BU |

RECEPTACLE LEGEND:



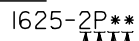
BLANK = WITH STANDARD MOUNTING EARS; WITH DETENTS
 1 = WITHOUT MOUNTING EARS; WITH DETENTS
 2 = WITH PREBENT MOUNTING EARS; WITH DETENTS
 3 = W/O MOUNTING EARS, WITH POSITIVE LOCK

BLANK = NATURAL
 AM=AMBER BK=BLACK BU=BLUE
 BN=BROWN GY=GRAY GN=GREEN
 OR=ORANGE RD=RED YW=YELLOW



DETAIL 3
STANDARD MOUNTING EARS
(SCALE 4:1)

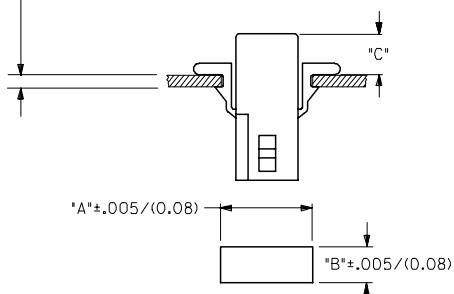
PLUG LEGEND:



1 = WITHOUT MOUNTING EARS
 2 = WITH PREBENT MOUNTING EARS
 3 = W/O MOUNTING EARS, WITH POSITIVE LOCK

BLANK = NATURAL
 AM=AMBER BK=BLACK BU=BLUE
 BN=BROWN GY=GRAY GN=GREEN
 OR=ORANGE RD=RED YW=YELLOW

MAX. PANEL THICKNESS .060/(1.52)

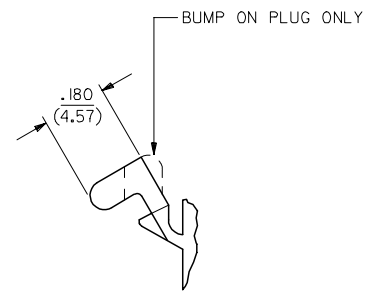


RECOMMENDED HOLE PATTERN

| HOUSING | DIM. "A" | DIM. "B" | PREBENT EAR DIM. "C" | STD. EAR DIM. "C" |
|------------|-----------------|----------------|----------------------|-------------------|
| PLUG | .609 (15.47) | .318 (8.08) | .24 (6.0) | .24 (6.1) |
| RECEPTACLE | .505 (12.83) | .265 (6.73) | .25 (6.4) | .25 (6.4) |

NOTES:

1. MATERIAL - NYLON TYPE 6/6, 94V-2
2. FINISH: NONE
3. PRODUCT SPECIFICATION: PS-02-06
4. PACKAGING SPECIFICATION: PK-1625-001
5. POSITIVE LOCK VERSION REQUIRES USE OF A SCREWDRIVER OR SIMILAR TOOL TO LIFT SHROUD ON PLUG HOUSING IN ORDER TO UNMATE RECEPTACLE HOUSINGS
6. HOUSINGS FOR USE WITH MOLEX .062/(1.57) DIA. SERIES TERMINALS.
7. CIRCUIT I.D. NUMBERS ON SIDE OF HOUSING APPEAR ON PARTS FROM TOOLS BUILT AFTER 07/01/1991.
8. THIS PART CONFORMS TO CLASS B REQUIREMENTS OF COSMETIC SPECIFICATION PS-45499-002.



DETAIL 4

PREBENT MOUNTING EARS
(SCALE 4:1)

UPDATE NOTES

| | | | | | | | |
|---------------------|------------|-----------------|---------------------------------------|-----------------|------------|--------------------|------------------------|
| EC NO: UCP2007-1980 | 2007/04/13 | QUALITY SYMBOLS | GENERAL TOLERANCES (UNLESS SPECIFIED) | DIMENSION STYLE | SCALE | DESIGN UNITS | THIRD ANGLE PROJECTION |
| DRAWN: PPR/DDE | 2007/04/16 | ▽=0 | mm INCH | IN/MM | 2:1 | INCH | ☉ |
| CHKD: AEL/HAG | 2007/04/19 | ▽=0 | 4 PLACES ± --- ± --- | DRAWN BY | DATE | TITLE | |
| APPR: FSM/TH | 2007/04/19 | | 3 PLACES ± --- ±.007 | JJS | 1988/04/14 | PLUG & RECEPTACLE | |
| | | | 2 PLACES ± 0.18 ±.010 | CHECKED BY | DATE | 2 CIRCUIT HOUSINGS | |
| | | | 1 PLACE ± 0.25 ± --- | RW | 1988/04/14 | .062(1.57)DIA. | |
| | | | ANGULAR ± 1 ° | APPROVED BY | DATE | | |
| | | | | RAS | 1988/04/14 | | |
| | | | | MATERIAL NO. | | | |
| | | | | DOCUMENT NO. | | | |
| | | | | SIZE | | | |
| | | | | C | | | |

| | | | |
|---|-----------|------------|------------------|
| DRAFT WHERE APPLICABLE MUST REMAIN WITHIN DIMENSIONS | SEE CHART | SD-1625-2* | SHEET NO. 3 OF 3 |
| THIS DRAWING CONTAINS INFORMATION THAT IS PROPRIETARY TO MOLEX INCORPORATED AND SHOULD NOT BE USED WITHOUT WRITTEN PERMISSION | | | |

12 11 10 9 8 7 6 5 4 3 2 1